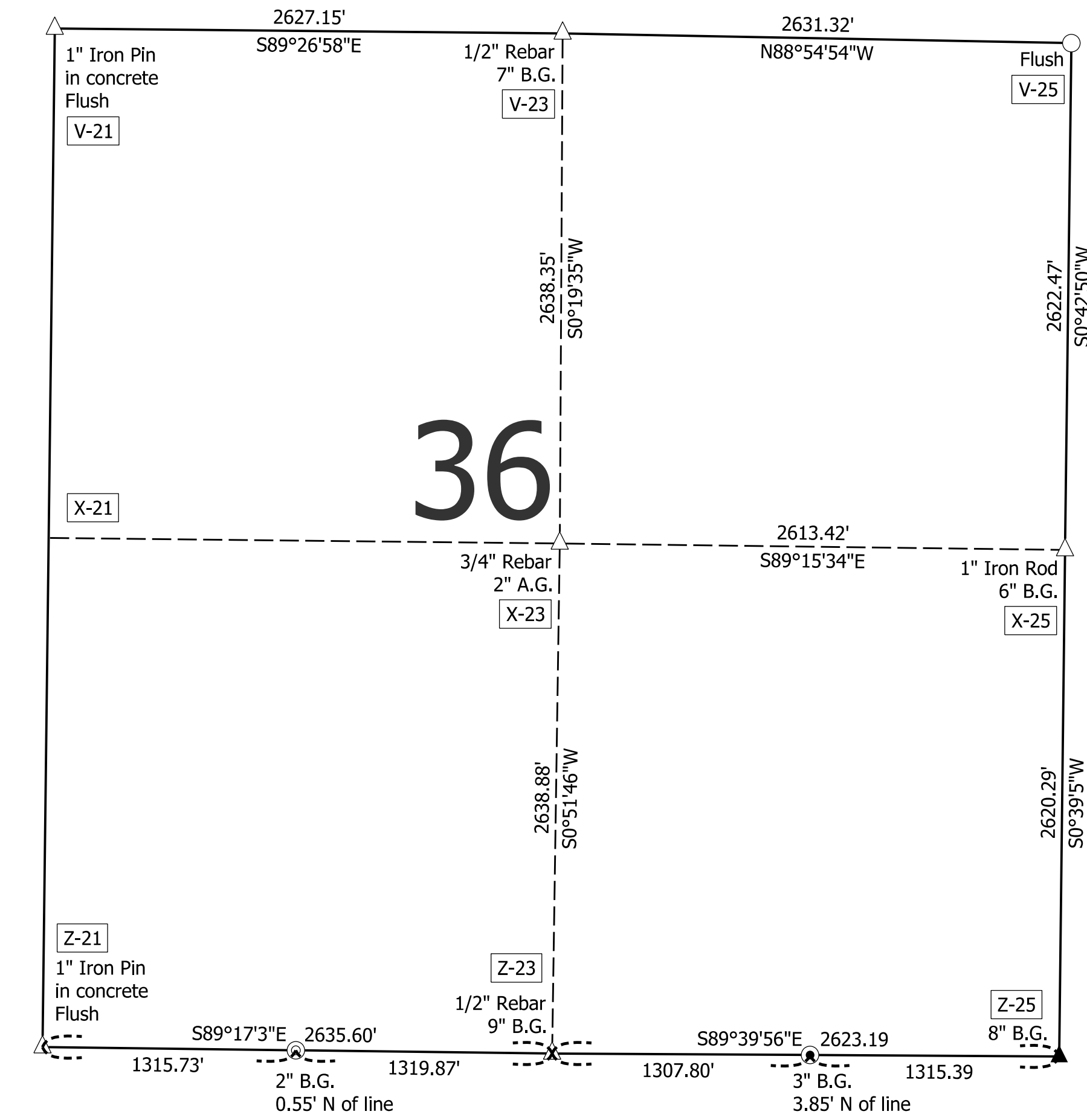
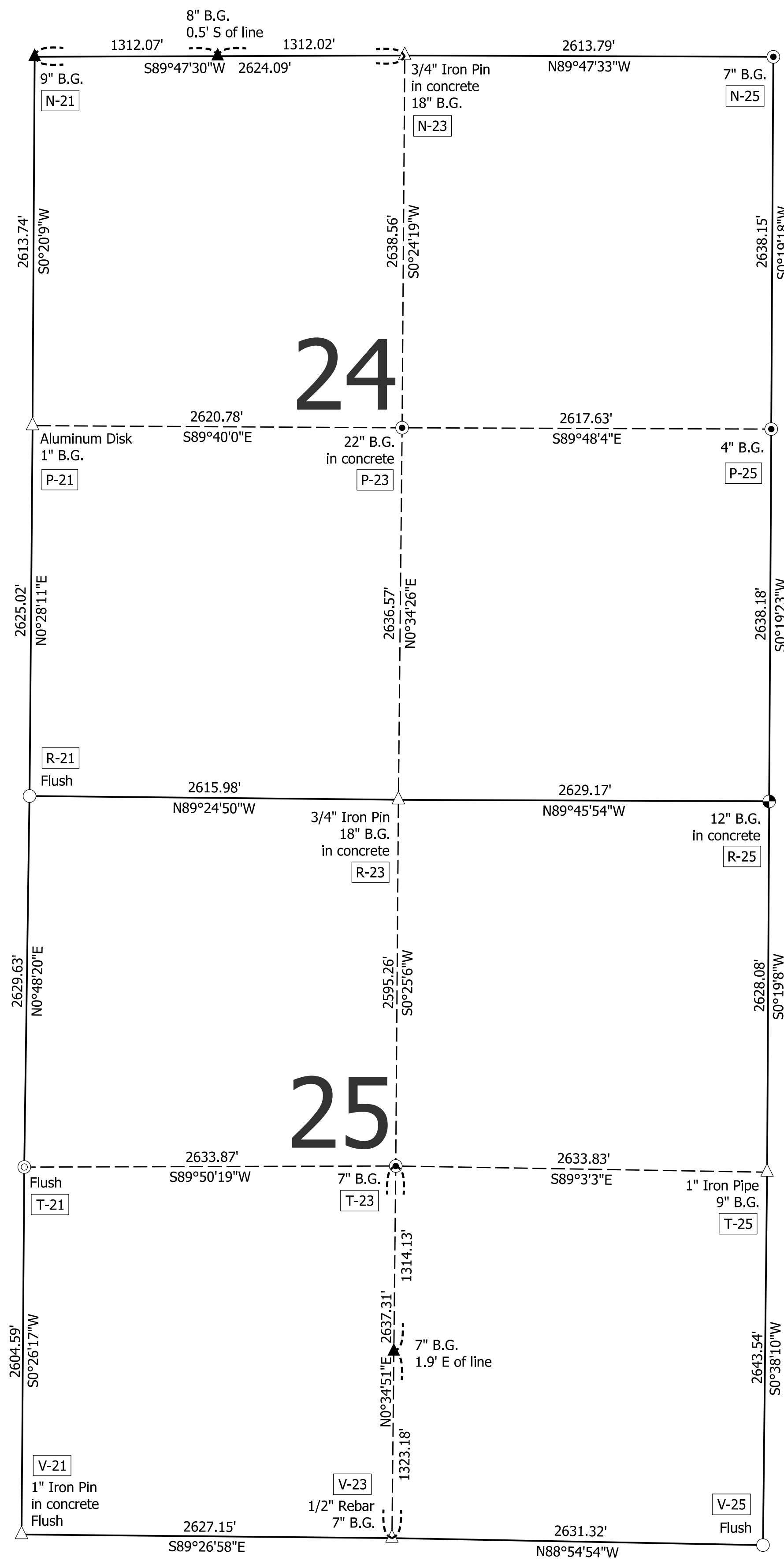
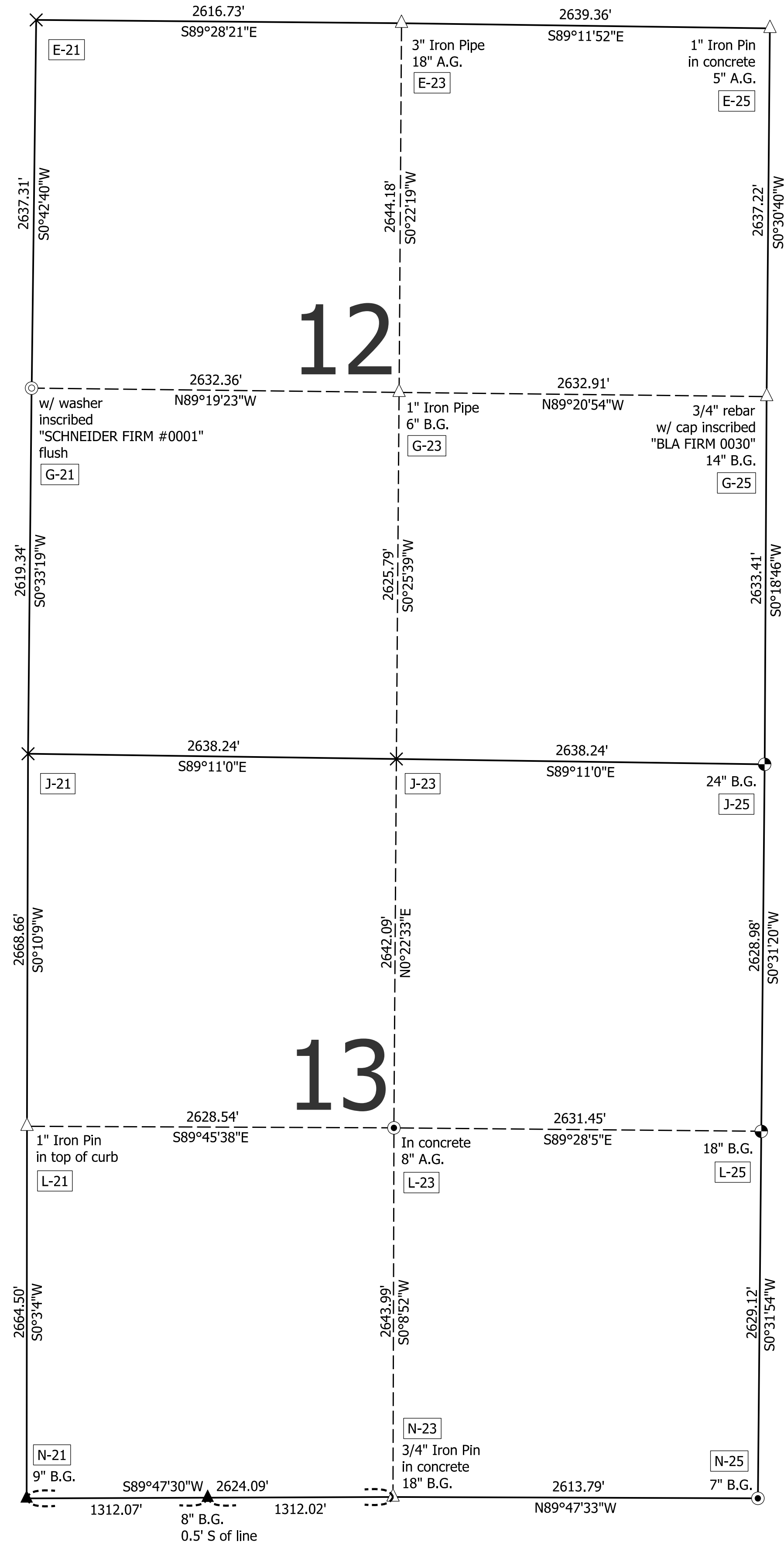


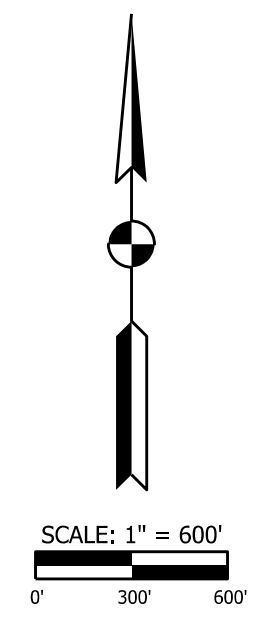
# SECTION CORNER PERPETUATION

Sections 12, 13, 24, 25 & 36  
 Township 6 South, Range 9 West  
 Ohio Township- Warrick County, Indiana  
**PLAT OF SURVEY**



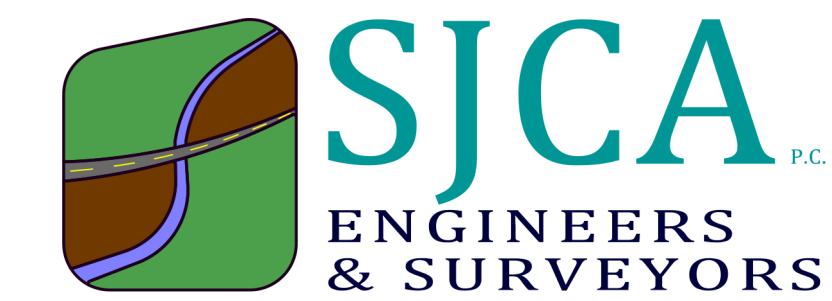
### LEGEND

- × Calculated Location
- Stone found as noted
- 1-1/2" Iron Pin found as noted
- ⦿ 5/8" Rebar found as noted
- ▲ Railroad Spike found as noted
- ⊙ Mag Nail found as noted
- Rebar w/ cap inscribed "SJCA FIRM 0107" set as noted
- △ Monument found as noted
- A.G. Above Grade
- B.G. Below Grade
- A-9 Corner Index
- (r) Record Distance



### GENERAL NOTES

Bearings shown are grid per Indiana State Plane Coordinates, West Zone (NAD 83). Distances shown are ground distances. Ground distances were derived by re-projecting Indiana State Plane Coordinate information to the InGCS "Warrick County".



9102 N. Meridian St., Suite 200 Indianapolis, IN 46260  
 (317) 566-0629  
 Fax: (317) 566-0633  
 Email: contactus@sjca-pc.com



*David C. Thomas*  
 David C. Thomas, L.S. 21300006 11/15/2021

**SURVEYOR'S CERTIFICATION**  
 This survey was performed wholly under the direction of David C. Thomas, Indiana Professional Surveyor Number 21300006 and to the best of my knowledge and belief, was executed according to the requirements of Title 865, Article 1, Rule 12 of the Indiana Administrative Code.